

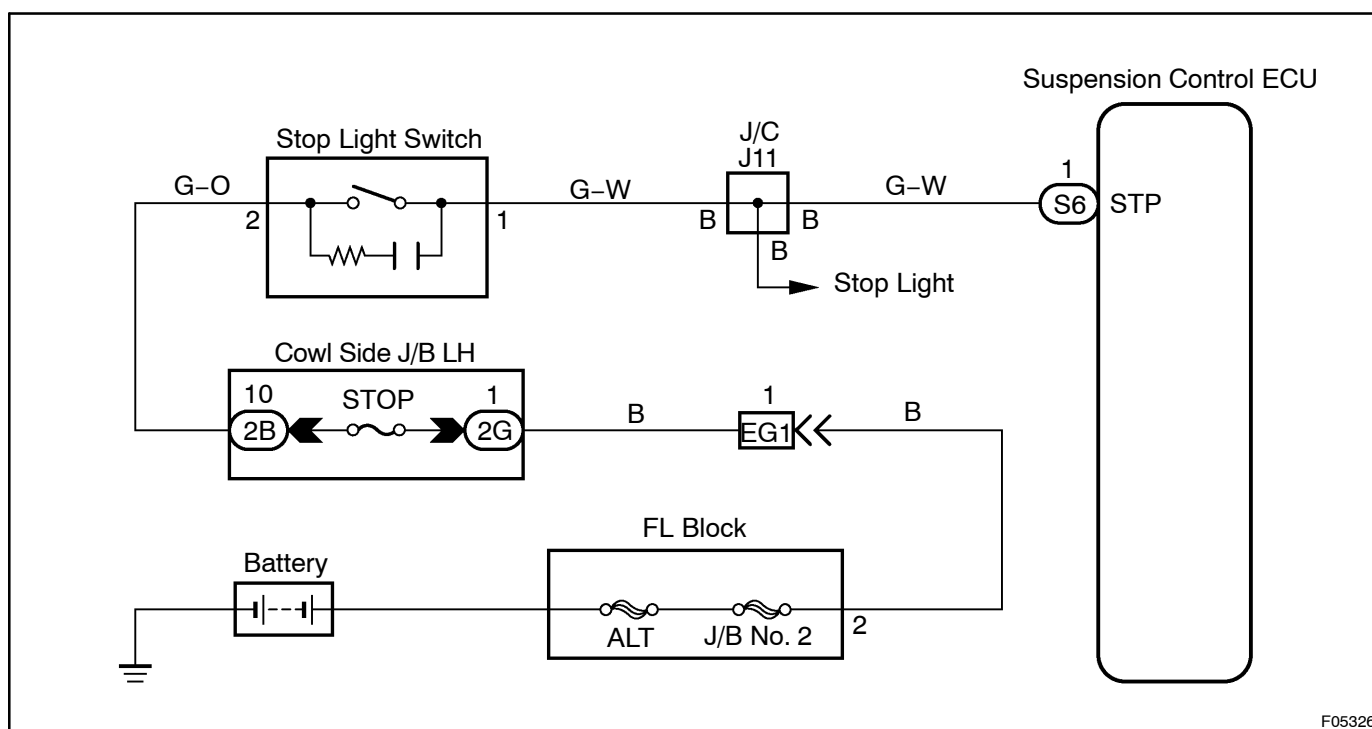
| | | |
|------------|-------------------|----------------------------------|
| DTC | C1782 / 82 | Stop Light Switch Circuit |
|------------|-------------------|----------------------------------|

CIRCUIT DESCRIPTION

When the brake pedal is depressed, the stop light switch comes on and battery positive voltage is applied to terminal STP of ECU. This signal is used by the ECU as one of the starting conditions for anti-dive control.

| DTC No. | DTC Detecting Condition | Trouble Area |
|------------|--|---|
| C1782 / 82 | Stop light switch signal does not change | <ul style="list-style-type: none"> • Stop light switch • Stop light switch circuit • ECU |

WIRING DIAGRAM



INSPECTION PROCEDURE

| | |
|----------|---------------------------------------|
| 1 | Check operation of stop light. |
|----------|---------------------------------------|

CHECK:

Check that the stop light comes on when the brake pedal is depressed and turns off when the brake pedal is released.

NG

Check stop light circuit (See page [BE-60](#)).

OK

2 Check output signal of stop light switch.

IN CASE OF USING LEXUS HAND-HELD TESTER:

PREPARATION:

- Connect the LEXUS hand-held tester to the DLC3.
- Turn the ignition switch ON and push the LEXUS hand-held tester main switch ON.
- Select the DATALIST mode on the LEXUS hand-held tester.

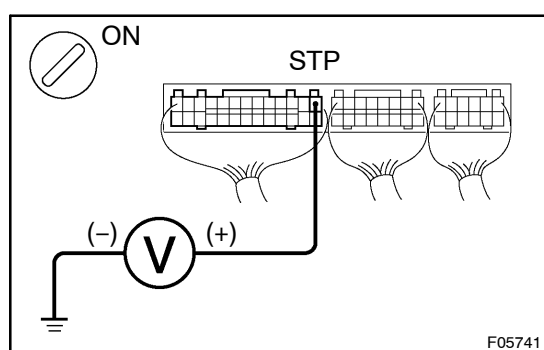
CHECK:

Check the stop light switch condition displayed on the LEXUS hand-held tester when depressing and releasing the brake pedal.

OK:

When the brake pedal is depressed: "ON" is displayed for stop light switch condition.

When the brake pedal is released: "OFF" is displayed for stop light switch condition.



IN CASE OF NOT USING LEXUS HAND-HELD TESTER:

PREPARATION:

Remove the suspension control ECU with connectors still connected.

CHECK:

- Turn the ignition switch ON.
- Measure voltage between terminal STP of suspension control ECU connector and body ground when brake pedal is released and depressed.

OK:

| Brake pedal | Voltage |
|-------------|-------------|
| Depressed | 9 – 14 V |
| Released | Below 1.5 V |

OK

No problem.

NG

3 Check for open circuit in harness and connector between stop light switch and suspension control ECU (See page IN-33).

NG

Repair or replace harness or connector.

OK

Check and replace suspension control ECU.